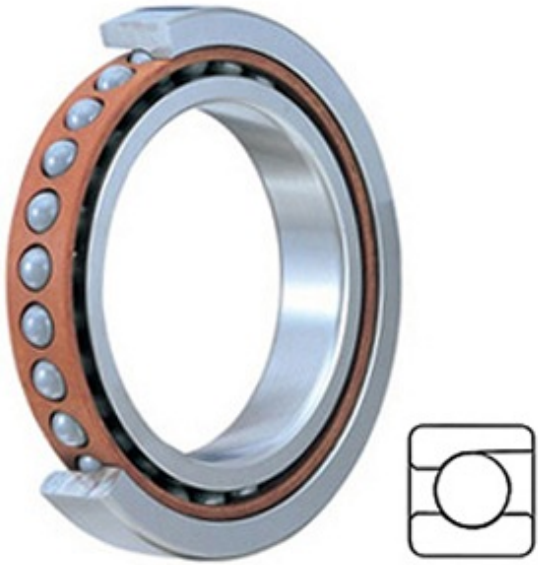




PARKER PUMP LTD



2MM218WI Bearing 2D drawings and 3D CAD models

3.543 Inch | 90 Millimeter x 6.299 Inch | 160
Millimeter x 1.181 Inch | 30 Millimeter TIMKEN
2MM218WI Precision Ball Bearings

Bearing No. 2MM218WI

Category	Precision Ball Bearings
Inventory	0.0
Manufacturer Name	TIMKEN
Minimum Buy Quantity	N/A
Weight	0
EAN	0087796071063
Product Group	B04270
Enclosure	Open
Precision Class	ABEC 7 ISO P4 ABEC 9 ISO P2
Material - Ball	Steel
Number of Bearings	1 (Single)
Contact Angle	15 Degree
Preload	None
Raceway Style	1 Rib Outer Ring
Cage Material	Phenolic
Rolling Element	Ball Bearing
Flush Ground	No
Inch - Metric	Metric
Other Features	Single Row Angular Contact Super High Precision
Long Description	90MM Bore; 160MM Outside Diameter; 30MM Width; Open Enclosure; ABEC 7 ISO P4 ABEC 9 ISO P2 Precision; Steel Ball



PARKER PUMP LTD

	Material; 1 (Single) Bearing; 15 Degree Contact Angle; Phenolic Cage Material; 1
Category	Precision Ball Bearings
UNSPSC	31171531
Harmonized Tariff Code	8482.10.50.28
Noun	Bearing
Keyword String	Ball Angular Contact
Manufacturer URL	http://www.timken.com
Weight / LBS	4.84
D	6.299 Inch 160 Millimeter
d	3.543 Inch 90 Millimeter
B	1.181 Inch 30 Millimeter
d - Bore	90 mm
D - Outer Diameter	160 mm
Bearing Width	30 mm
do - Ball Diameter	22.225 mm
C0 - Static Radial Rating	97900 N
Ce - Dynamic Radial Rating ¹	129900 N
Limiting Speed (Grease)	8900 rpm
Limiting Speed (Oil)	17800 rpm
Ball Type	STEEL
Cage Type	CR - Phenolic Outer Land Riding Cage
Bearing Weight	2.196 Kg
Design Units	METRIC
Full Timken Part Number	2MM218WICRDUH
R - Inner Ring To Clear Radius ²	2.0 mm
r - Outer Ring To Clear Radius ³	2.0 mm
da - Inner Ring Backing Diameter	102.700 mm



PARKER PUMP LTD

Da - Outer Ring Backing Diameter	148.0 mm
-------------------------------------	----------